

CamTrace

videosurveillance

CamTrace installation on virtual machine

Document version : v1.2

Creation date of the document : 22/04/2021

Last modification date of the document : 28/04/2021

For further information, please contact

www.camtrace.com

Table des matières

1	Preface.....	3
2	Setting up VirtualBox.....	4
2.1	VM creation.....	4
2.2	VM configuration.....	7
2.2.1	ISO image selection.....	7
2.2.2	Network settings.....	8
2.3	Launch the VM.....	9
2.3.1	CT-Server installation.....	9
2.3.2	Snapshot.....	10
2.3.3	VirtualBox window size.....	11

1 Preface

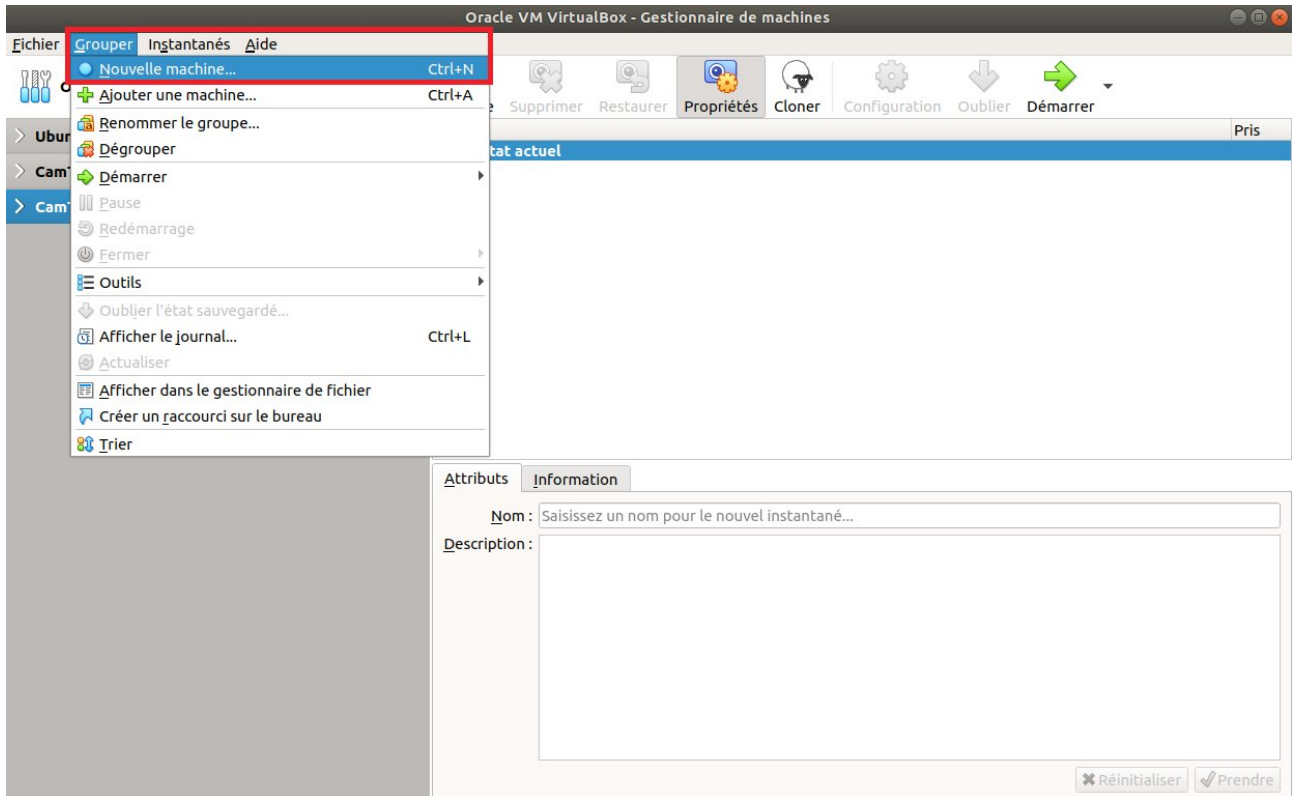
This document describes the process for installing a CamTrace Server on a virtual machine. The purpose of this document is to describe the process of installing a CamTrace Server on a virtual machine. The purpose of a virtual machine is to install a CamTrace Server on a machine running another operating system (e.g. Windows). A virtual machine also offers the possibility of taking snapshots, which allow you to easily return to a previous state of the machine.

We will use VirtualBox software as an example, but you can use other virtual machine software.

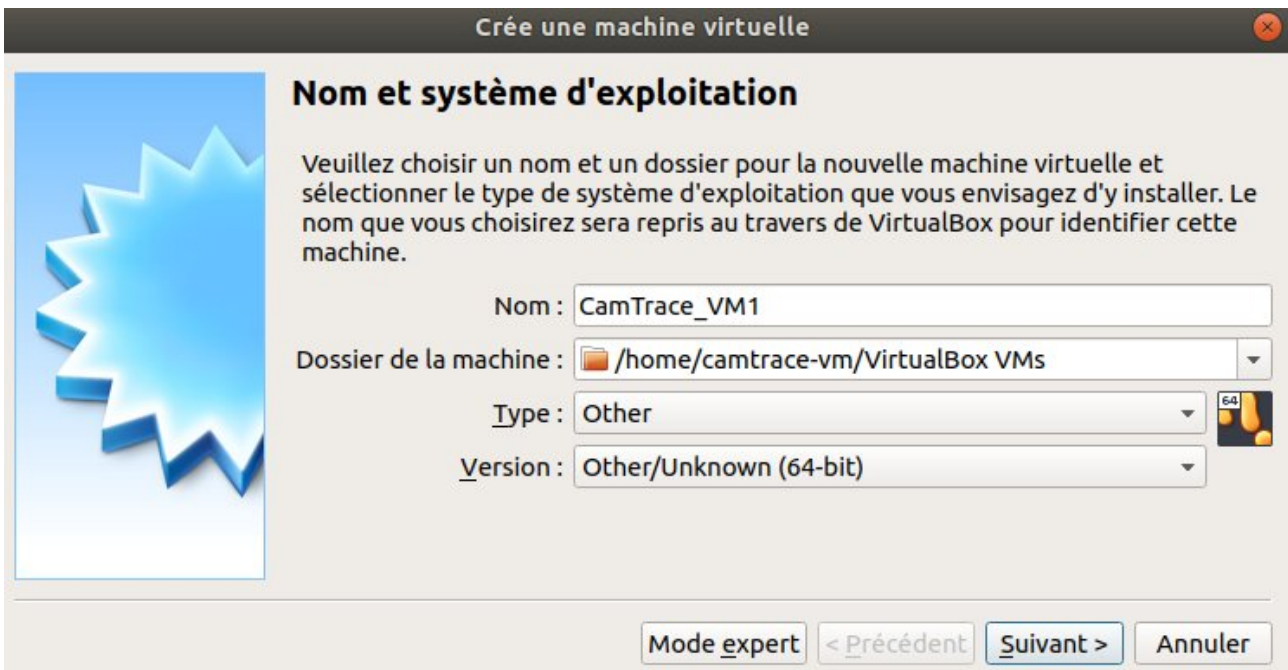
2 Setting up VirtualBox

2.1 VM creation

Launch VirtualBox and create a new virtual machine :



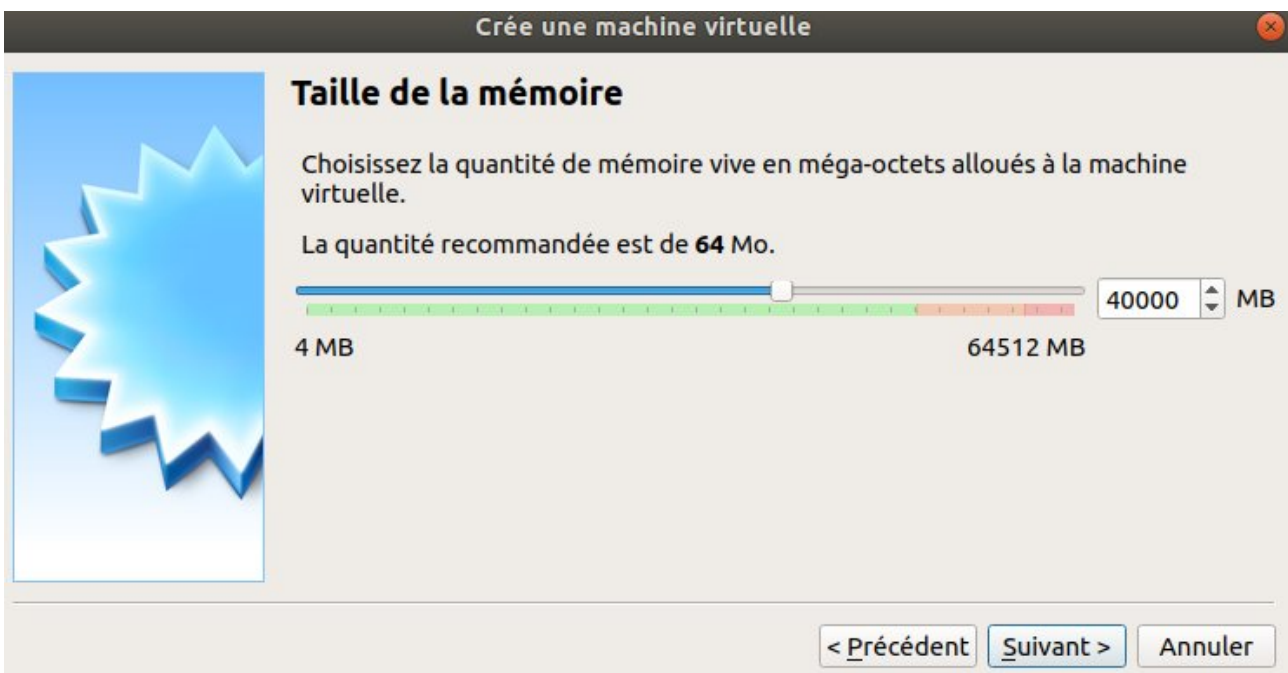
A "Create a virtual machine" pop-up appears:



Give a name to your virtual machine.

For the OS type/version, chose 'Other/Unknown (64-bit)' (because Camtrace is a custom OS based on Xubuntu 2022). Then click Next.

Allocate an amount of memory (RAM) :



Then click Next.

A "Hard Disk" screen is displayed.
Create a virtual hard disk. A "Hard disk file type" window appears, choose "VDI":



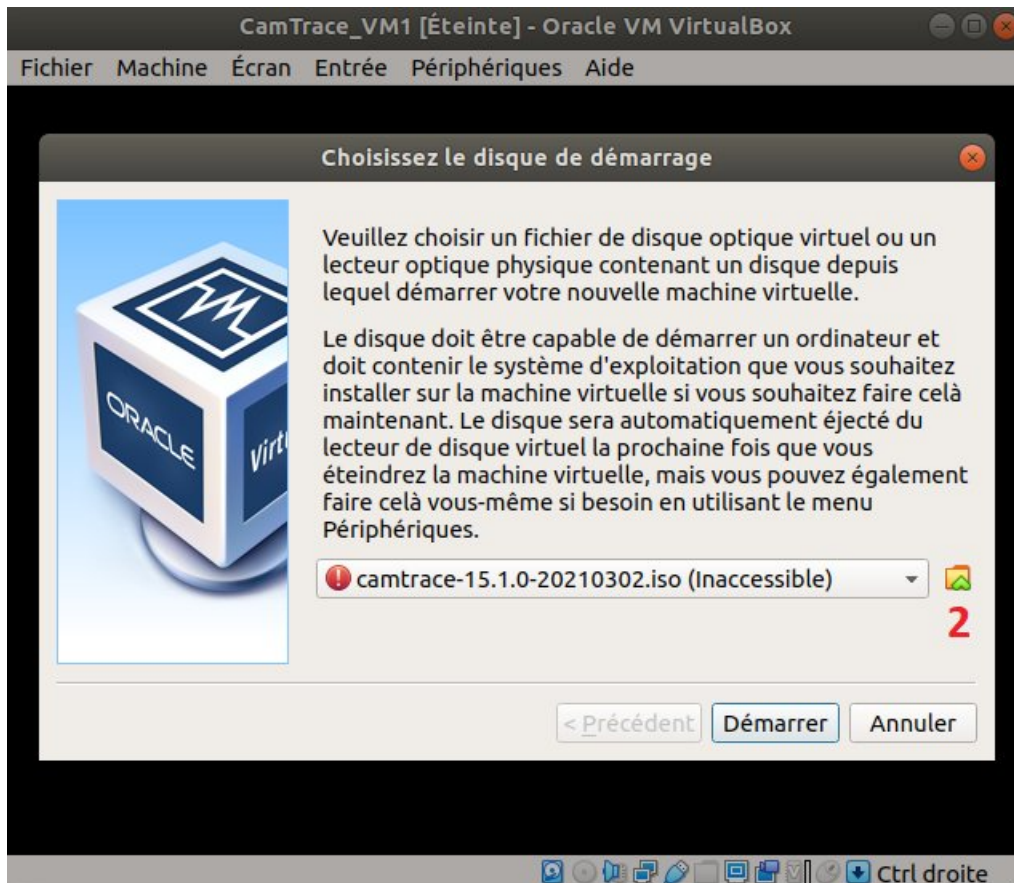
It is recommended to use a **fixed** disk space (and not dynamic disk space) :



2.2 VM configuration

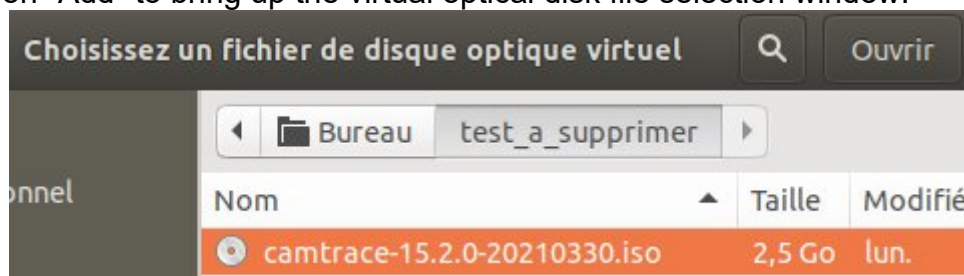
2.2.1 ISO image selection

A pop-up appears for the selection of the boot disk:



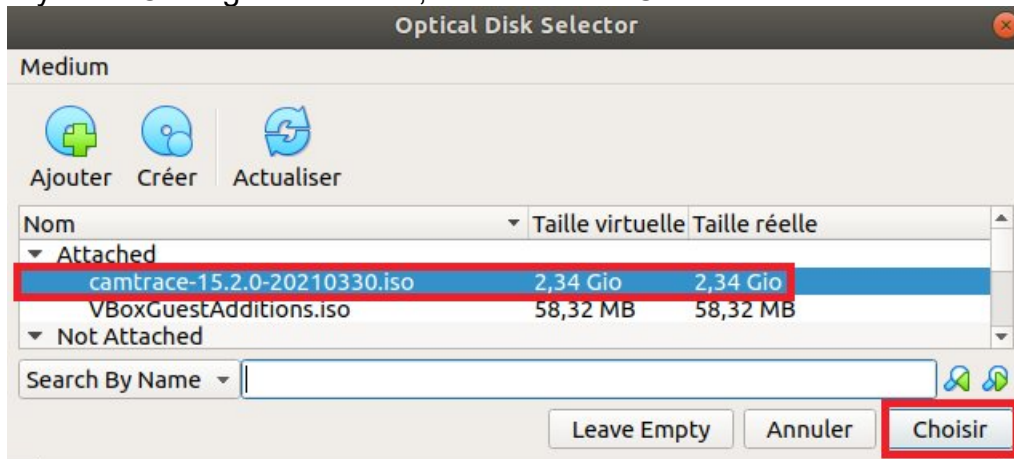
Click on the folder icon (see [2] in the above screenshot): an "Optical Disk Selector" pop-up appears.

Then click on "Add" to bring up the virtual optical disk file selection window:



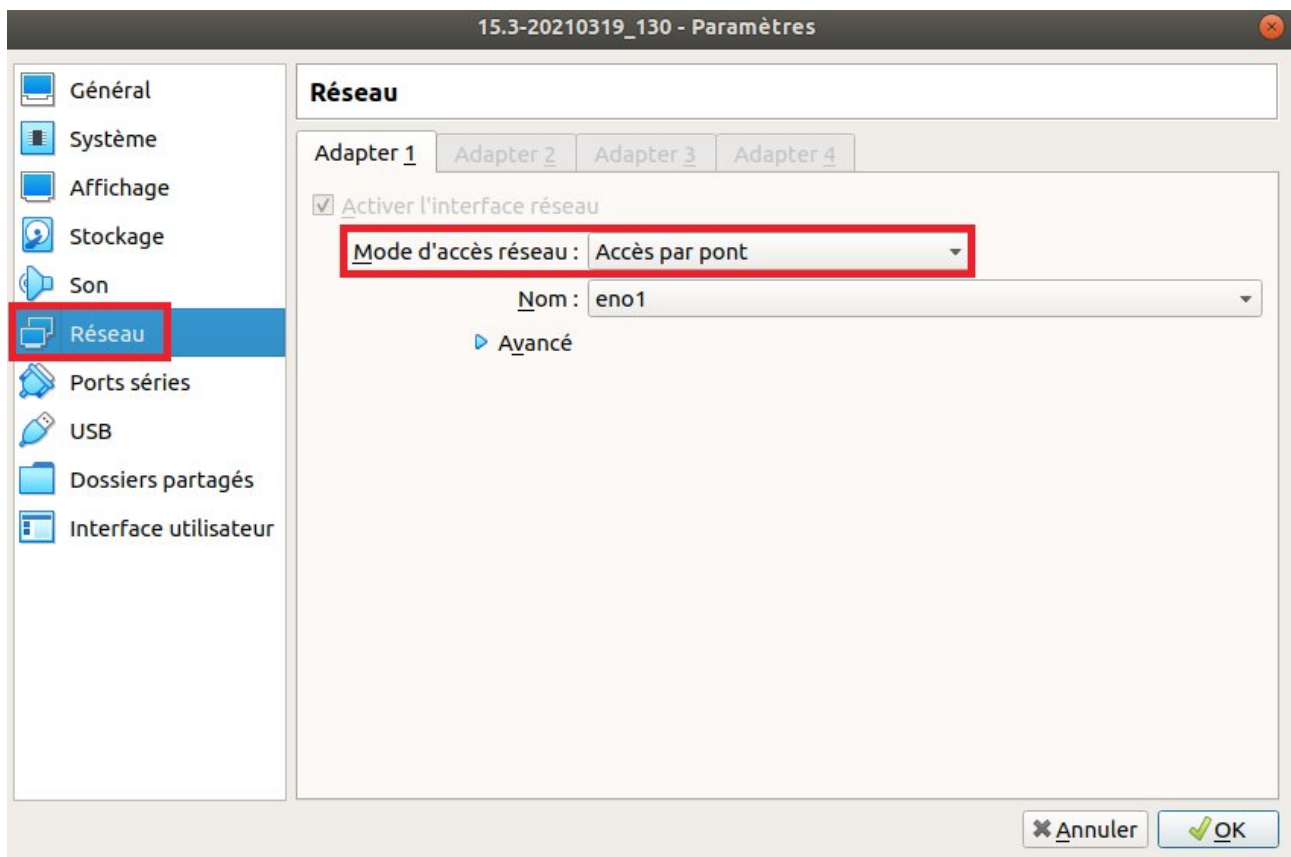
Select your ISO image and click on "Open".

Check that your ISO image is selected; then click on "Choose":



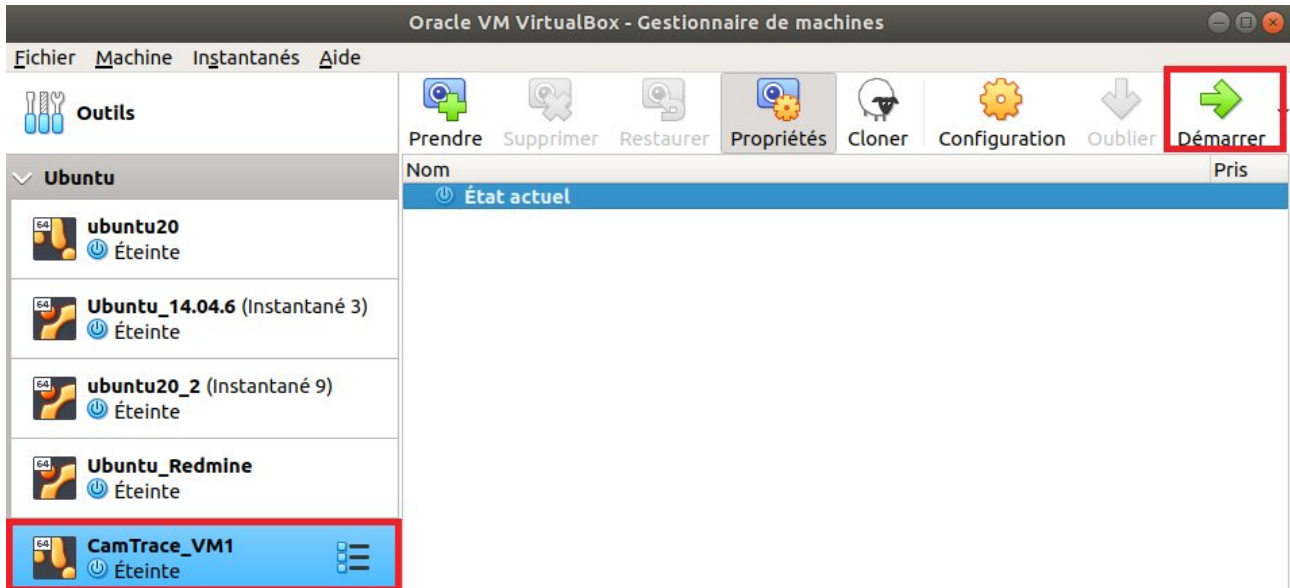
2.2.2 Network settings

If you want your VM to benefit from the network connection of your host machine: before starting your VM, select your virtual machine and click on "Configuration". In the "Network" tab, choose a "Bridge Access":



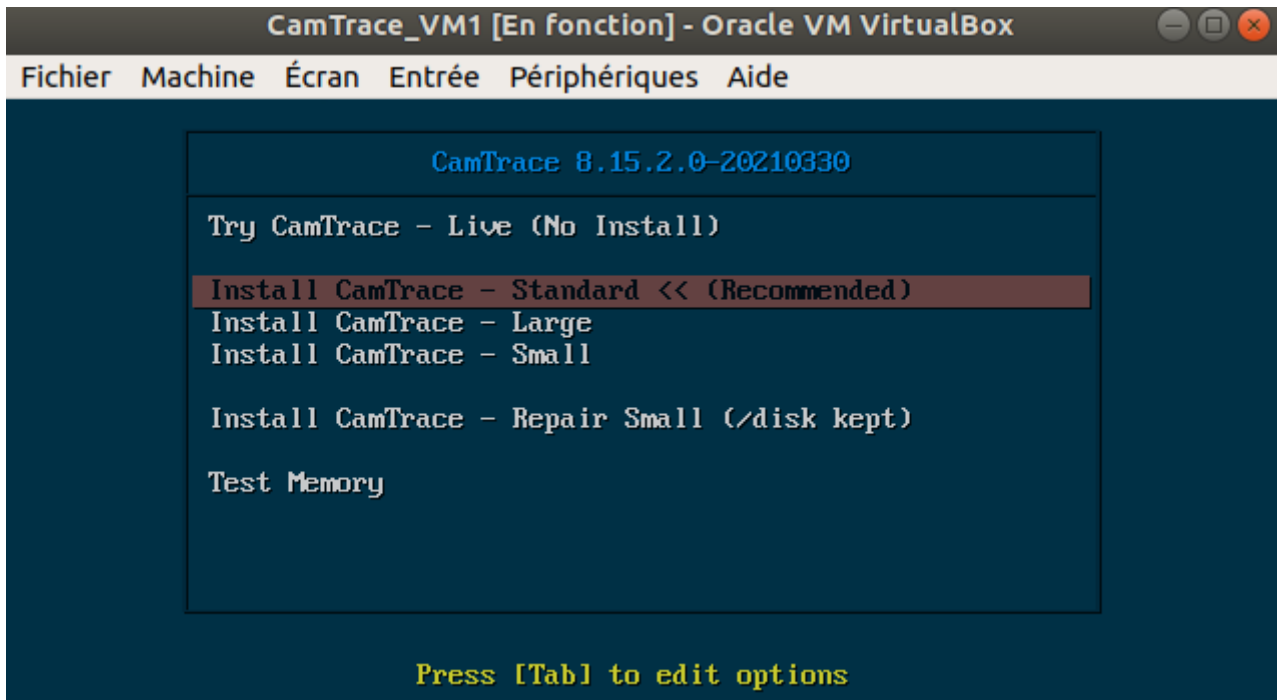
2.3 Launch the VM

You can now start your VM :



2.3.1 CT-Server installation

You may proceed with the installation of your CamTrace Server:

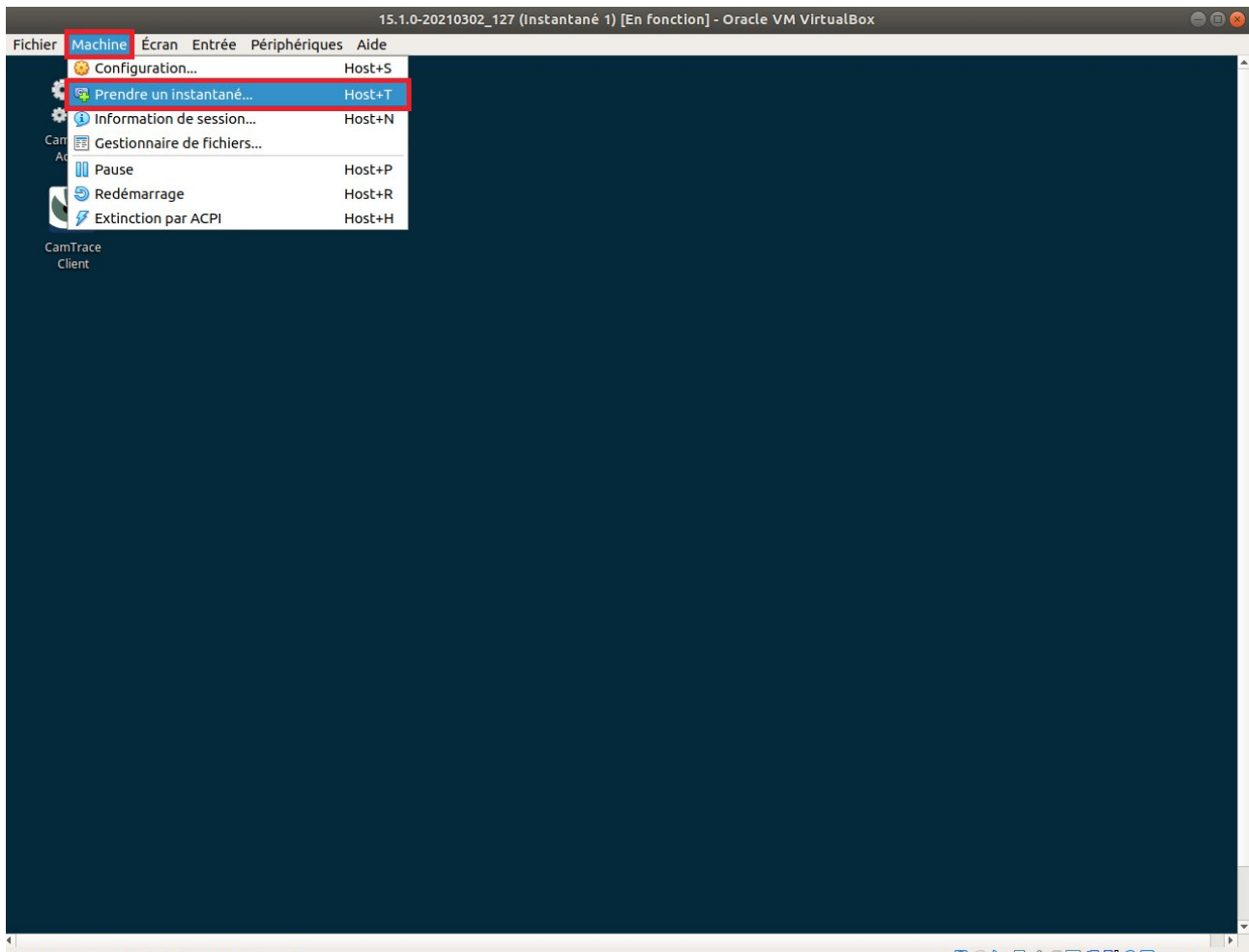


Please refer to the "CamTrace Server Installation" manual and the "Getting Started Guide" manual for further installation.

Important: To "exit" your cursor from the VM, you can use the "CTRL" key on the right of your keyboard (the "CTRL" key on the left of your keyboard will not work).

2.3.2 Snapshot

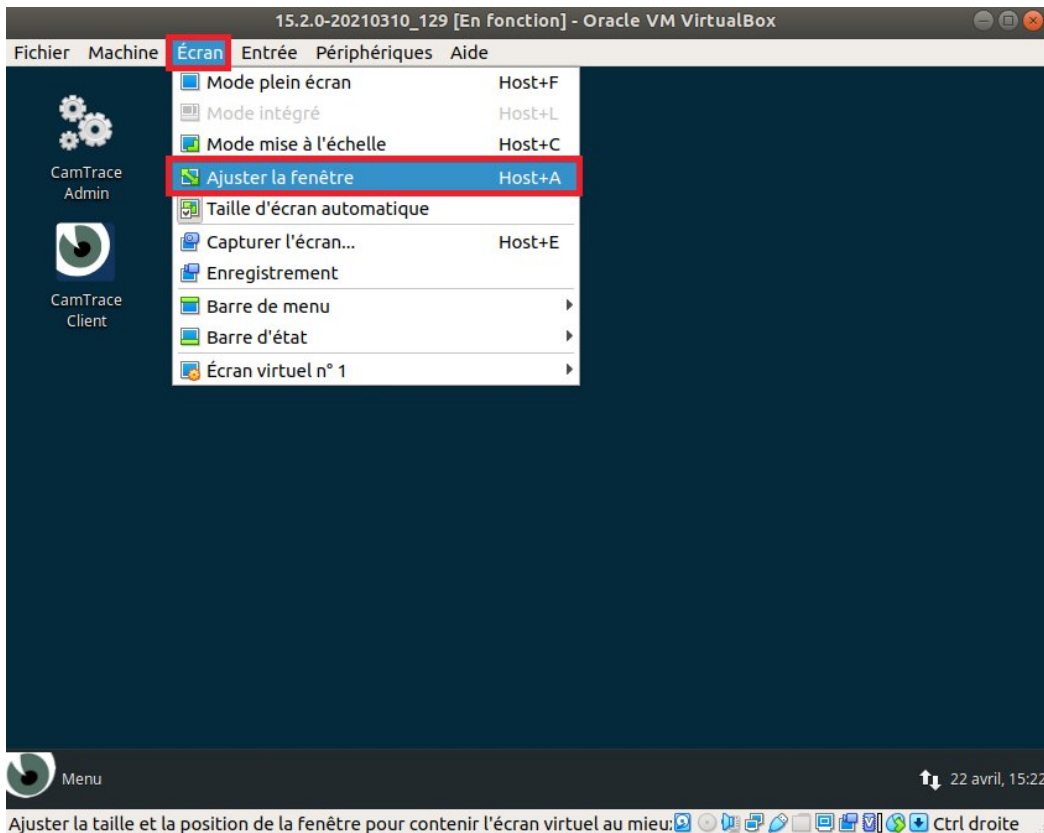
After the commissioning of your CamTrace Server (so after the system configuration, the cameras declaration...), it is advised to take a snapshot of your VM in order to save a healthy base of your installation. To take a snapshot, click on "Machine" then "Take a snapshot":



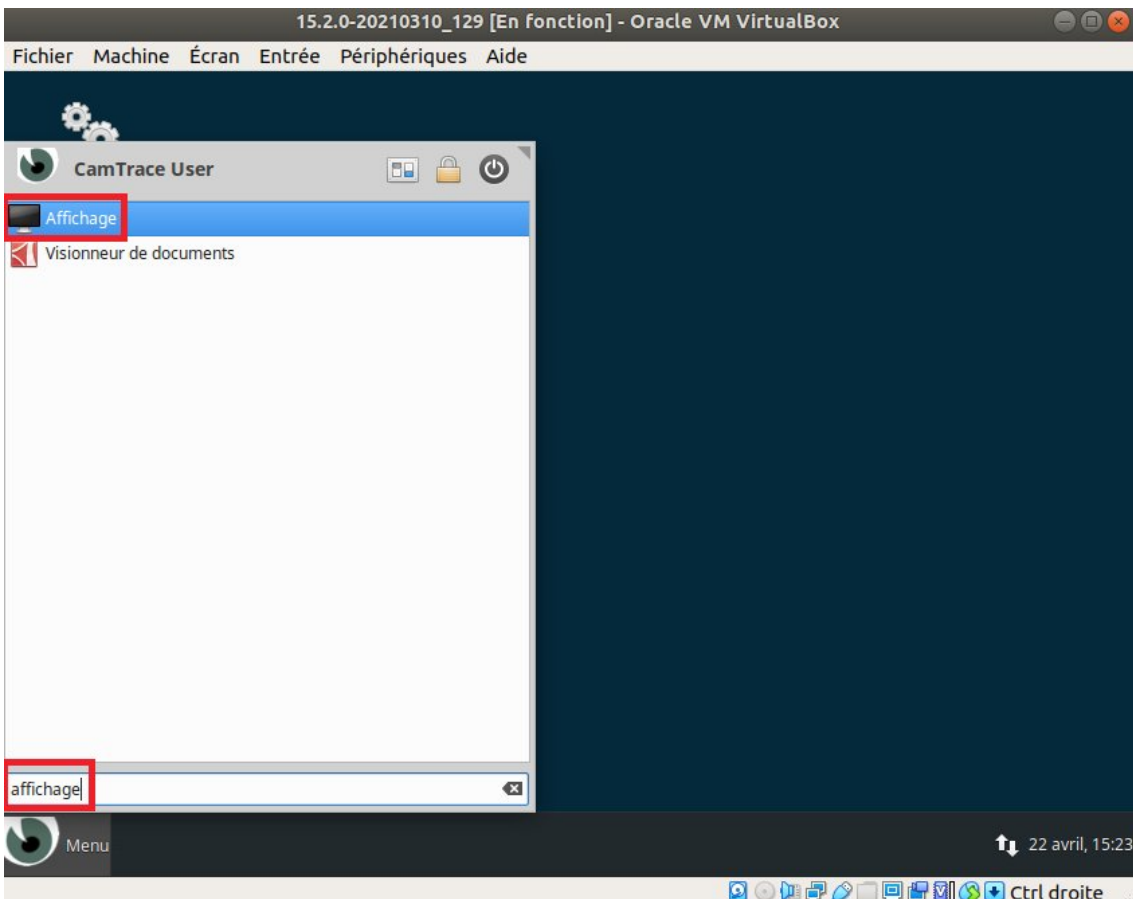
Enter a precise description of your snapshot, so you know what you are restoring (if you need to restore a snapshot later).

2.3.3 VirtualBox window size

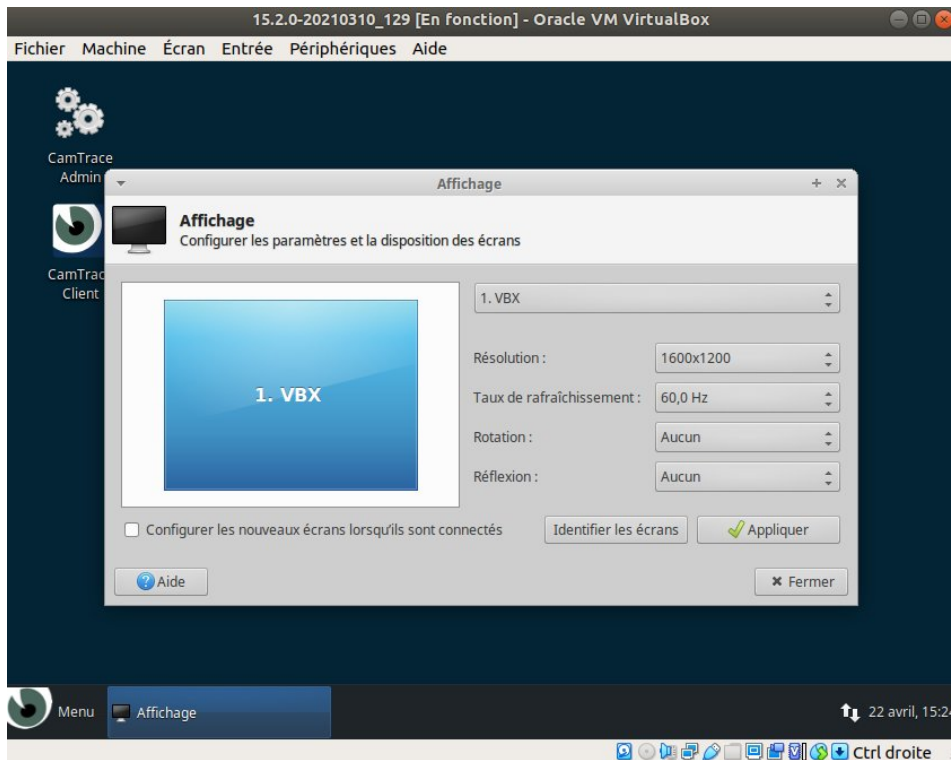
To enlarge the window size of the VM, click on "Screen" then choose "Fit to Window" from the VM menu:



Then, from the CamTrace Operating System Menu, type "View" to open the View utility:



Choose the right resolution for your equipment:



then click on "Apply" and "Close".

For further information, please contact

www.camtrace.com